

**RATES**

For full eight days, Saturday afternoon, August 18th, to Sunday afternoon, August 26th:

- 18 years and over.....\$36.00
- 12 years through 17 years.....\$20.00
- 2 years through 11 years.....\$10.00
- Under 2 years.....No Charge

These rates include rooms, 24 meals, linen, pillows, blankets, etc.



**RESERVATIONS**

For reservations, please return the enclosed card or write to:

Carl A. Cederstrom  
 624 - 6th Street, North  
 Nampa, Idaho



A Bible School is a grand experience and we anticipate with pleasure its renewal and hope that we may share it together.

**YOU ARE INVITED  
TO ATTEND**



**Sixth Annual**

**Christadelphian  
Western Bible School**

**August 18 - 26, 1956**

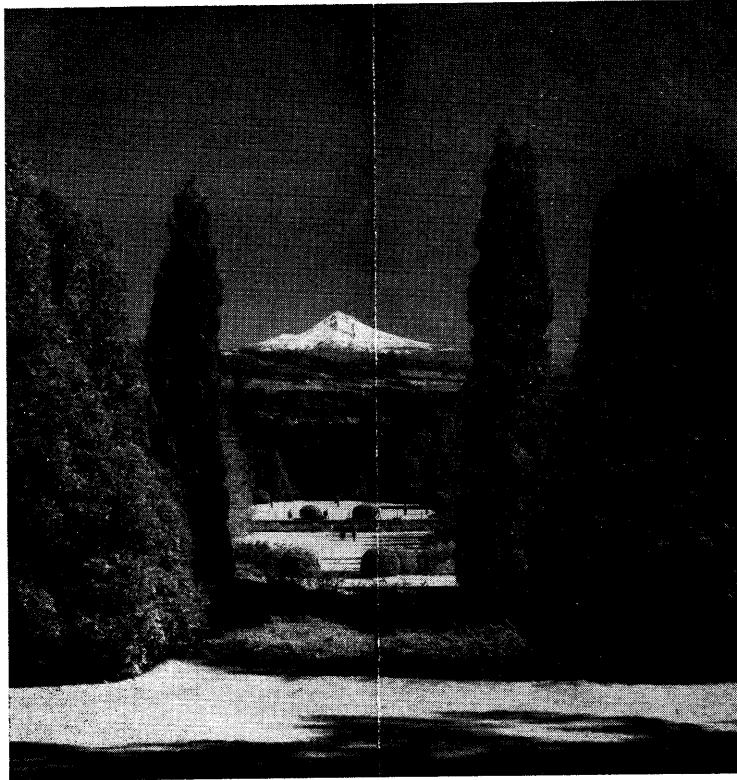
**LEWIS AND CLARK COLLEGE**

**615 S. W. Palatine Road**

**Portland, Oregon**

## THEME

"For I am not ashamed of the gospel of Christ: for it is the power of God unto :



Mount Hood—from Campus

### CLASSES

Classes on subjects in the following groups have been suggested:

- Prophecy—Apocalypse
- Types
- First Principles
- Law and Grace
- First and Second Advent
- Psalms
- Gospel
- The Guiding Light

Some outstanding teachers have agreed to help, one of whom is Bro. David Warrington of Norfolk, Virginia.

### DAILY PROGRAM

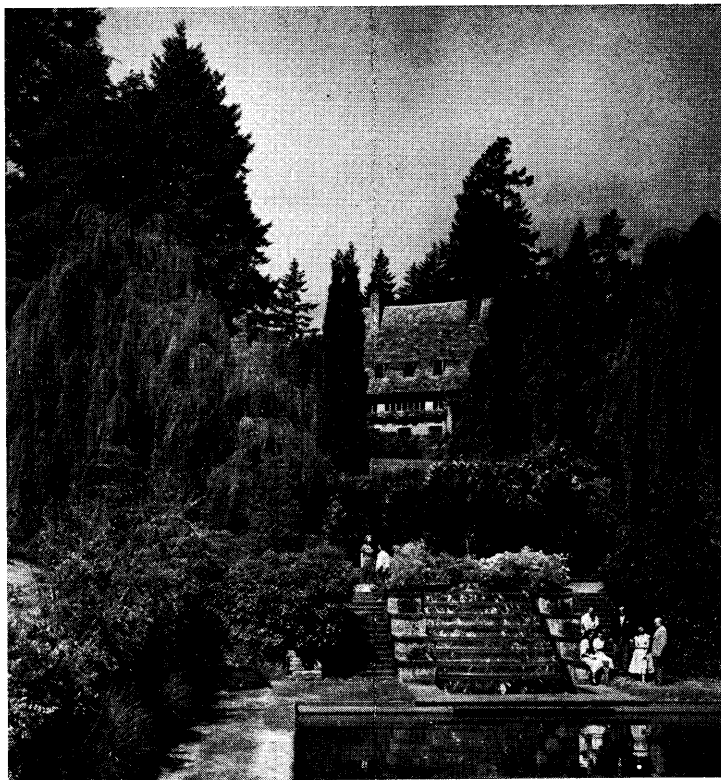
Our daily schedule is balanced to include classes — forum-type panels — exhortations — afternoon recreation — evening program, including music and appropriate movies and slides.

A choice of classes is offered so that four different subjects may be studied during the week.

Optional programs, including travel slides and exhortations by visiting brethren, are expected to be available during some afternoons.

salvation to everyone that believeth; to the Jew first, and also to the Greek."

Romans 1:16



Administration Building—Lewis & Clark Campus

### **WELCOME**

You and your friends are extended a cordial invitation to attend our Bible School.

Depending upon the Will of God while awaiting the return of Christ, we have made the following plans and hope you can share them.

Arrangements are proceeding to try and provide all that is needed for an inspiring and profitable Bible School.

The physical requirements appear to be sufficient for all our needs.

Class rooms and assembly halls for lectures and evening programs are modern and comfortable.

Every care is being taken to permit our attention to the important and interesting subjects of classes and talks with a minimum of distractions or discomfort.

It is hoped and believed that those attending may gain a clearer understanding of God's Word and leave enriched with spiritual gains.

All at the school is planned to center about the Bible and the theme for this year's school.

Emphasis has been placed on programs in which our younger people may participate.

Forum and discussion group panels are planned on subjects of current interest.

## ACCOMMODATIONS

Including new construction in last two years, we are assured of sleeping accommodations for over 250—permitting arrangements for sleeping one to four per room.

Dining room will seat 200.

Having the college to ourselves, there will be plenty of class rooms and assembly halls for lectures and evening programs.



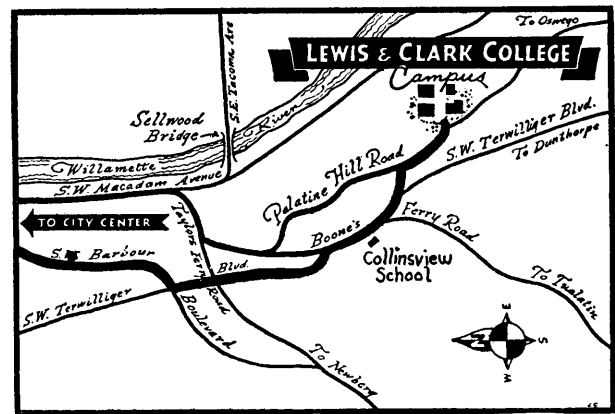
## RECREATION

While the Bible School is limited to those serious about Bible Study and not to be considered just an ordinary vacation, the committee has planned for certain recreation periods.

Bro. Chas Ghent, Jr., and his committee are handling these arrangements.

The college has unlimited athletic facilities for recreation, including a swimming pool, and these are planned to be made available during the recreation period each afternoon.

Also, tours to neighboring points of interest are planned for those visiting the beautiful northwest for the first time.



## ROADS TO THE CAMPUS

Leaving downtown Portland, take S. W. 4th, 5th, 6th or Broadway, all running into Barbur Boulevard (99-W). Just past the 4-mile marker turn left onto Terwilliger Boulevard. Follow signs to the college.



## TRANSPORTATION

Transportation directly to the college is furnished by the Tualatin stages, Trailways Bus depot, Sixth and Salmon Streets, which run on a regular schedule on week days but not on Sundays.

The Dunthorpe bus, leaving from the Greyhound central bus depot at 509 S. W. Taylor, arrives near the campus on Palatine Hill Road.